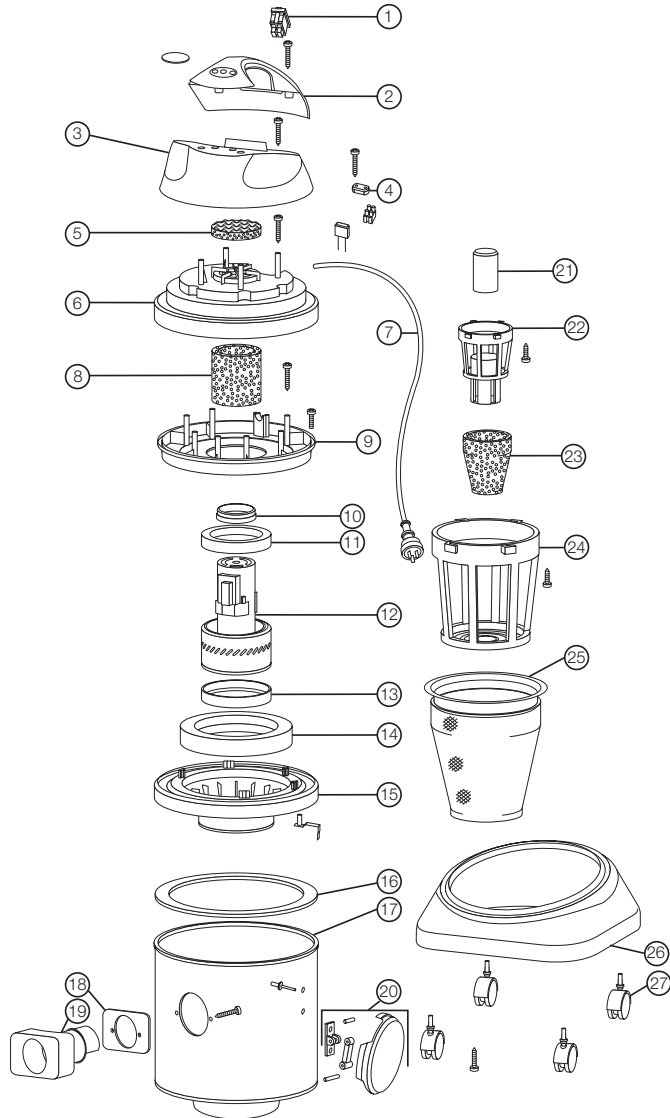


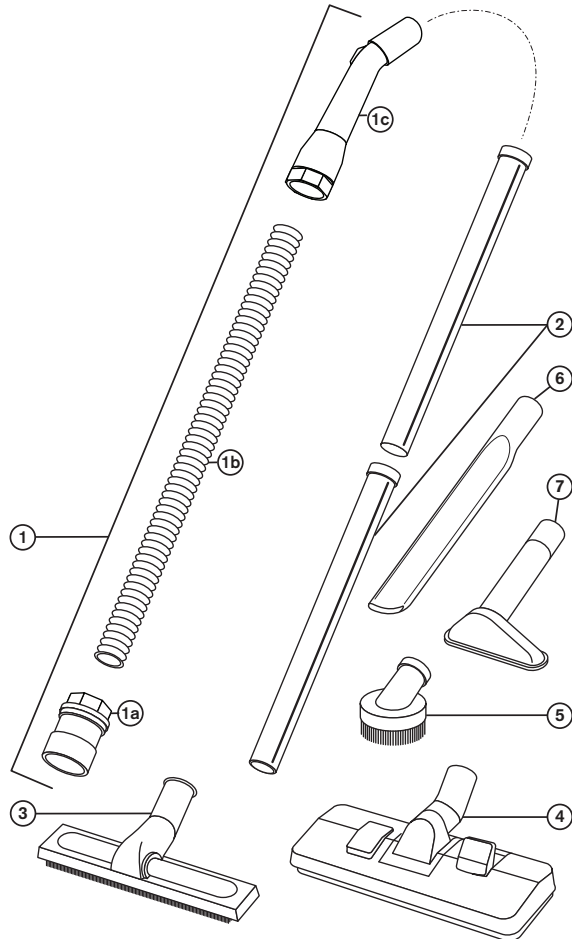
Hydropro 21



No.	Item Description	Item No.
1.	Switch - On-Off - Illuminated - Waterproof - Red	SWI005
2.	Cover - Handle - Plastic - Black - 260mm	COV008
3.	Cover - Top - Plastic - 335mm	COV006
4.	Clamp - Cable - Plastic - Black - 35mm	CLA002
5.	Filter - Pre-Motor - Flat - Foam	FIL009
6.	Cover - Motor Holder - Plastic - 350mm	COV003
7.	Power Cord - Hard Wired - 18m - 2C - Plug Type I	PWC001
8.	Filter - Pre-Motor - Cylinder - Foam	FIL016
9.	Holder - Motor - Plastic - Blue - 335mm	HOL006
10.	Spacer - Ring - Plastic - 82mm	SPA004
11.	Gasket - Motor - Rubber - 150mm	GAS009
12.	Motor - Two Stage - By Pass - 250V - 1200W	MOT007
13.	Gasket - Motor - Foam - 145mm	GAS004
14.	Spacer - Ring - Foam - 230mm	SPA008
15.	Base - Motor - Plastic - Black - 350mm	BAS003
16.	Gasket - Head - Rubber - 330mm	GAS001
17.	Canister - Hydropro 21	CAN009
18.	Gasket - Inlet - Rubber - 110mm	GAS003
19.	Hose Inlet - Plastic - Black - 45mm	HOI002
20.	Latch - Plastic - Black - 110mm	LAT003
21.	Float - Plastic - Black - 80mm	FLO001
22.	Cage - Float - Plastic - Black	CAG005
23.	Filter - Wet Use - Cover - Foam	FIL010
24.	Cage - Filter - Plastic - Black	CAG003
25.	Filter - Dry Use - Liner - Synthetic	FIL014
26.	Base - Canister - Plastic - Black - 400mm	BAS001
27.	Wheel - Castor - Black Plastic - 60mm	WHL001

Specifications	
Model Number	01HY021VW
Volts / Frequency	230-250V AC 50/60Hz
Motor	1200W two-stage by-pass
Noise Level (at 1.5m)	76dB(A)
Filtration	Wet one-stage Dry two-stage (HEPA rated filter available)
Volumetric Airflow (max.)	55L/s
Capacity	21L
Weight (ex. power cord assembly & hose assembly)	8.8kg
Power Source	Mains, 8m power cord, hardwired

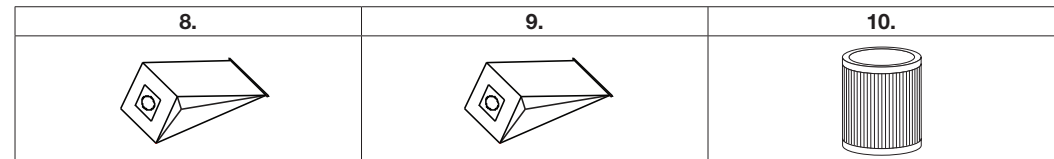
Hydropro 21



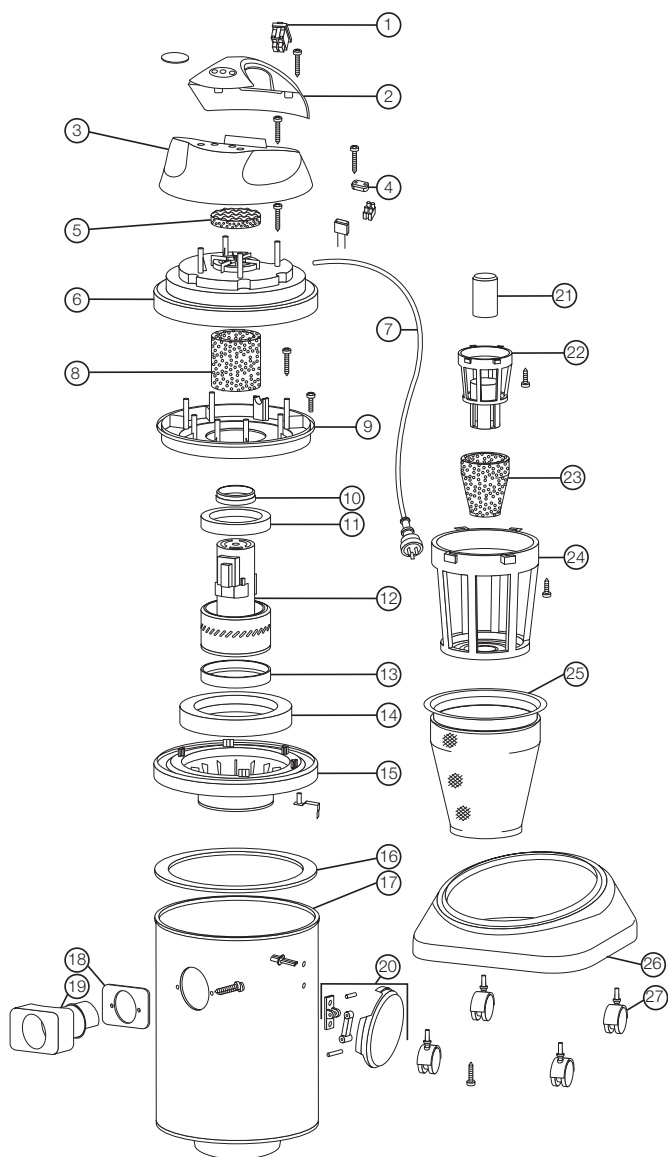
No.	Item Description	Item No.
1.	Hose Assembly - 32mm - 2m - Push Fit	HOA005
1a.	Connector - Hose - Plastic - Black - 32mm	CON003
1b.	Hose - 32mm - 2m	HOS001
1c.	Hand Piece - 32mm - Plastic	HAP002
2.	Wand - Two Piece - Chrome - 32mm	WND002
3.	Tool - Squeegee - 32mm - 300mm	FLT011
4.	Floor Tool - Combination - 32mm - 270mm	FLT003
5.	Accessory - Dusting Brush - 32mm	ACC001
6.	Accessory - Crevice Tool - 32mm	ACC002
7.	Accessory - Upholstery Tool - 32mm	ACC003

Optional Extras

No.	Item Description	Item No.
8.	Dust Bag - Disposable - Paper - Sealed - Pkt 5	DUB010
9.	Dust Bag - Disposable - SMS - Sealed - Pkt 10	DUB011
10.	Filter - Dry Use - Cartridge - HEPA	FIL012



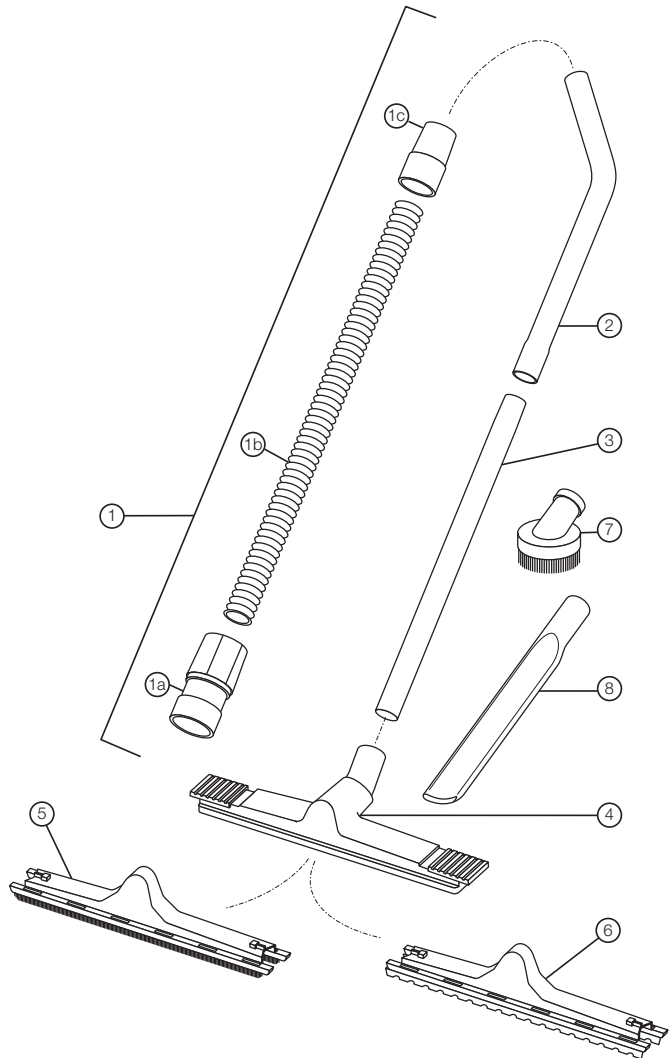
Hydropro 36



No.	Item Description	Item No.
1.	Switch - On-Off - Illuminated - Waterproof - Red	SWI005
2.	Cover - Handle - Plastic - Black - 260mm	COV008
3.	Cover - Top - Plastic - 335mm	COV006
4.	Clamp - Cable - Plastic - Black - 35mm	CLA002
5.	Filter - Pre-Motor - Flat - Foam	FIL009
6.	Cover - Motor Holder - Plastic - 350mm	COV003
7.	Power Cord - Hard Wired - 18m - 2C - Plug Type I	PWC001
8.	Filter - Pre-Motor - Cylinder - Foam	FIL016
9.	Holder - Motor - Plastic - Blue - 335mm	HOL006
10.	Spacer - Ring - Plastic - 82mm	SPA004
11.	Gasket - Motor - Rubber - 150mm	GAS009
12.	Motor - Two Stage - By Pass - 250V - 1200W	MOT007
13.	Gasket - Motor - Foam - 145mm	GAS004
14.	Spacer - Ring - Foam - 230mm	SPA008
15.	Base - Motor - Plastic - Black - 350mm	BAS003
16.	Gasket - Head - Rubber - 330mm	GAS001
17.	Canister - Hydropro 36	CAN010
18.	Gasket - Inlet - Rubber - 110mm	GAS003
19.	Hose Inlet - Plastic - Black - 45mm	HOI002
20.	Latch - Plastic - Black - 110mm	LAT003
21.	Float - Plastic - Black - 80mm	FLO001
22.	Cage - Float - Plastic - Black	CAG005
23.	Filter - Wet Use - Cover - Foam	FIL010
24.	Cage - Filter - Plastic - Black	CAG003
25.	Filter - Dry Use - Liner - Synthetic	FIL014
26.	Base - Canister - Plastic - Black - 400mm	BAS001
27.	Wheel - Castor - Black Plastic - 60mm	WHL001

Specifications	
Model Number	01HY036VW
Volts / Frequency	230-250 AC 50/60Hz
Motor	1200W two-stage by-pass
Noise Level (at 1.5m)	72dB(A)
Filtration	Wet one-stage Dry two-stage (HEPA rated filter available)
Volumetric Airflow (max.)	55L/s
Capacity	36L
Weight (ex. power cord assembly & hose assembly)	9.6kg
Power Source	Mains, 8m power cord, hardwired

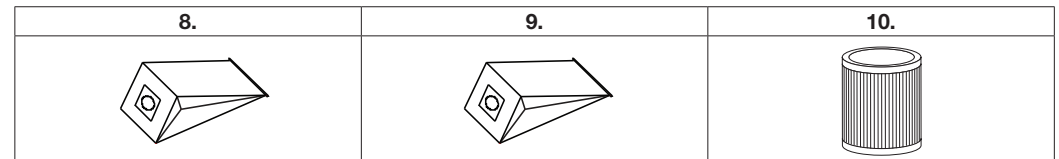
Hydropro 36



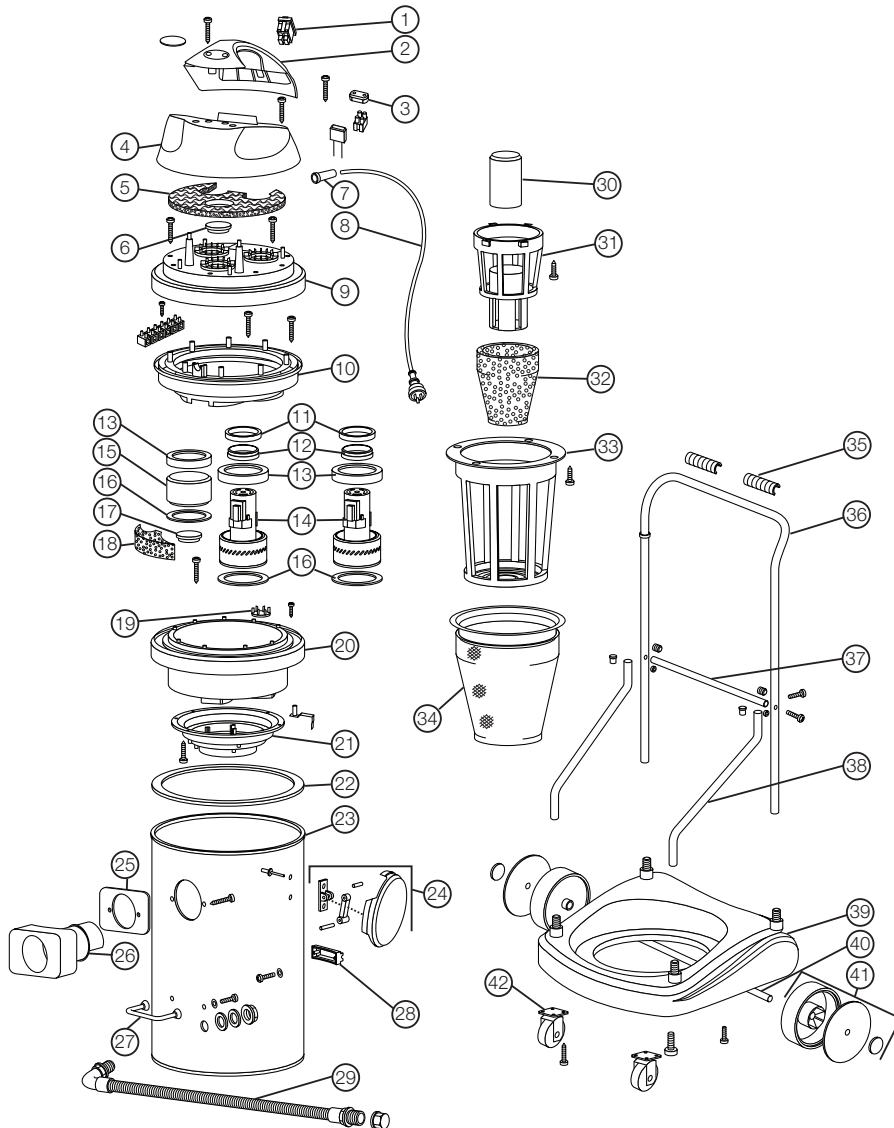
No.	Item Description	Item No.
1.	Hose Assembly - 38mm - 2.5m - Push Fit	HOA006
1a.	Connector - Hose - Plastic - Black - 38mm	CON005
1b.	Hose - 38mm - 2.5m	HOS003
1c.	Connector - Hose - Plastic - Black - 38mm	CON004
2.	Wand - Bent Piece - Chrome - 38mm	WND004
3.	Wand - Straight Piece - Chrome - 38mm	WND005
4.	Floor Tool - Body - 38mm - 300mm	FLT009
5.	Floor Tool Fitting - Hard Surface Insert - 300mm	FLF003
6.	Floor Tool Fitting - Squeegee Insert - 300mm	FLT005
7.	Accessory - Dusting Brush - 38mm	ACC004
8.	Accessory - Crevice Tool - 38mm	ACC005

Optional Extras

No.	Item Description	Item No.
8.	Dust Bag - Disposable - Paper - Sealed - Pkt 5	DUB012
9.	Dust Bag - Disposable - SMS - Sealed - Pkt 5	DUB013
10.	Filter - Dry Use - Cartridge - HEPA	FIL012



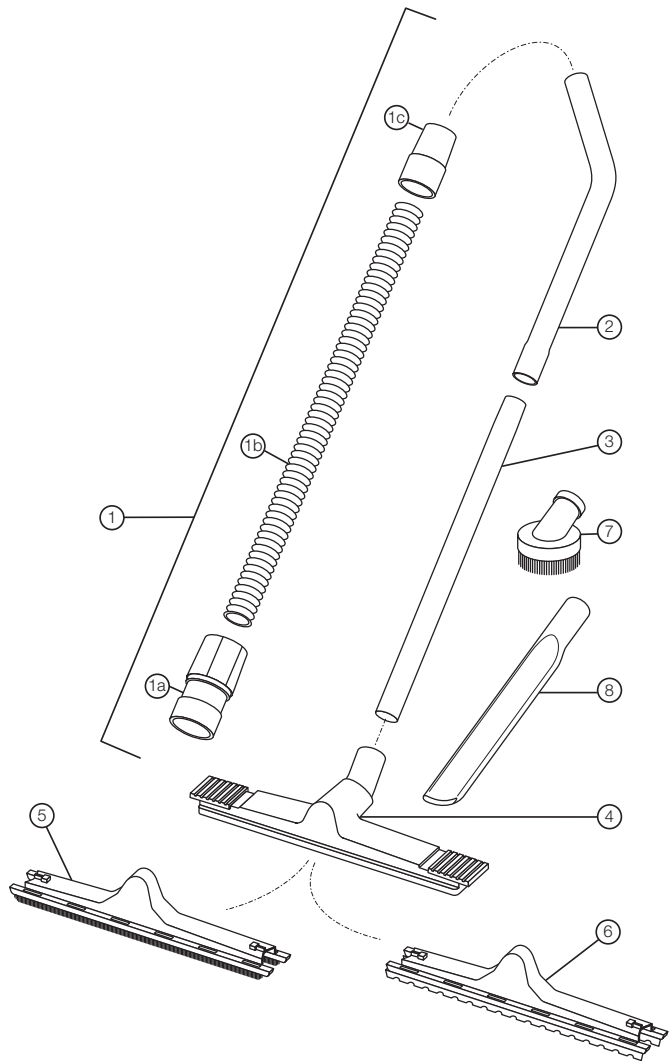
Hydropro 76



No.	Part Name	Part No.	No.	Part Name	Part No.
1.	Switch - On-Off - Illuminated - Waterproof - Red	SWI005	22.	Gasket - Head - Rubber - 441mm	GAS002
2.	Cover - Handle - Plastic - Black - 345mm	COV007	23.	Canister - Hydropro 76	CAN011
3.	Clamp - Cable - Plastic - Black - 35mm	CLA002	24.	Latch - Plastic - Black - 110mm	LAT003
4.	Cover - Top - Plastic - 440mm	COV004	25.	Gasket - Inlet - Rubber - 110mm	GAS003
5.	Filter - Pre-Motor - Flat - Foam	FIL011	26.	Hose Inlet - Plastic - Black - 45mm	HOI002
6.	Cap - Blank - Plastic - Clear - 70mm	CAP005	27.	Handle - Plastic - Black - 130mm	HAN003
7.	Grommet - Cable - Rubber - Black - 48mm	GRO001	28.	Bracket - Tank - Plastic - Black - 120mm	BRA001
8.	Power Cord - Hard Wired - 8.5m - 2C - Plug Type	PWC012	29.	Hose Assembly - 32mm - 1m - Drainage	HOA007
9.	Cover - Motor Holder - Plastic - 450mm	COV005	30.	Float - Plastic - Black - 80mm	FLO001
10.	Holder - Motor - Plastic - Blue - 440mm	HOL007	31.	Cage - Float - Plastic - Black	CAG005
11.	Spacer - Ring - Foam - 85mm	SPA009	32.	Filter - Wet Use - Cover - Foam	FIL010
12.	Spacer - Ring - Plastic - 80mm	SPA005	33.	Cage - Filter - Plastic - Black	CAG004
13.	Gasket - Motor - Rubber - 150mm	GAS009	34.	Filter - Dry Use - Liner - Synthetic	FIL015
14.	Motor - Two Stage - By Pass - 230V - 1100W	MOT006	35.	Grip - Handle - Plastic - Grey - 130mm - Pkt 2	GRI001
15.	Spacer - Motor - Plastic - 138mm	SPA010	36.	Handle - Steel - Silver - 840mm x 540mm	HAN001
16.	Gasket - Motor - Foam - 145mm	GAS004	37.	Bar - Crossbeam - Steel - 515mm	BAR002
17.	Cap - Blank - Plastic - Clear - 45mm	CAP004	38.	Bar - Support - Steel - 580mm	BAR001
18.	Insulation - Noise - Foam - 185mm	INS001	39.	Base - Canister - Plastic - Black - 600mm	BAS002
19.	Valve - Plastic - 58mm	VAL001	40.	Axle - Steel - 548mm	AXL001
20.	Base - Motor - Plastic - Black - 450mm	BAS004	41.	Wheel - Black Plastic Inner - Rubber - 195mm	WHL003
21.	Holder - Basket - Plastic - Black - 300mm	HOL010	42.	Wheel - Castor - With Plate - Grey Rubber - 80mm	WHL002

Specifications	
Model Number	01HY076VW
Volts / Frequency	230-250V AC 50/60Hz
Motor	2 x 1100W two-stage by-pass
Noise Level (at 1.5m)	75dB(A) 73dB(A) (single motor)
Filtration	Wet one-stage Dry two-stage (HEPA rated filter available)
Volumetric Airflow (max.)	67L/s 45L/s (single motor)
Capacity	76L
Weight (ex. power cord assembly & hose assembly)	23.1kg
Power Source	Mains, 8.5m power cord, hardwired

Hydropro 76



No.	Item Description	Item No.
1.	Hose Assembly - 38mm - 2.5m - Push Fit	HOA006
1a.	Connector - Hose - Plastic - Black - 38mm	CON005
1b.	Hose - 38mm - 2.5m	HOS003
1c.	Connector - Hose - Plastic - Black - 38mm	CON004
2.	Wand - Bent Piece - Chrome - 38mm	WND004
3.	Wand - Straight Piece - Chrome - 38mm	WND005
4.	Floor Tool - Body - 38mm - 400mm	FLT010
5.	Floor Tool Fitting - Hard Surface Insert - 400mm	FLF004
6.	Floor Tool Fitting - Squeegee Insert - 400mm	FLF006
7.	Accessory - Dusting Brush - 38mm	ACC004
8.	Accessory - Crevice Tool - 38mm	ACC005

Optional Extras

No.	Item Description	Item No.
8.	Dust Bag - Disposable - Paper - Sealed - Pkt 5	DUB014
9.	Dust Bag - Disposable - SMS - Sealed - Pkt 5	DUB015
10.	Filter - Dry Use - Cartridge - HEPA	FIL013

